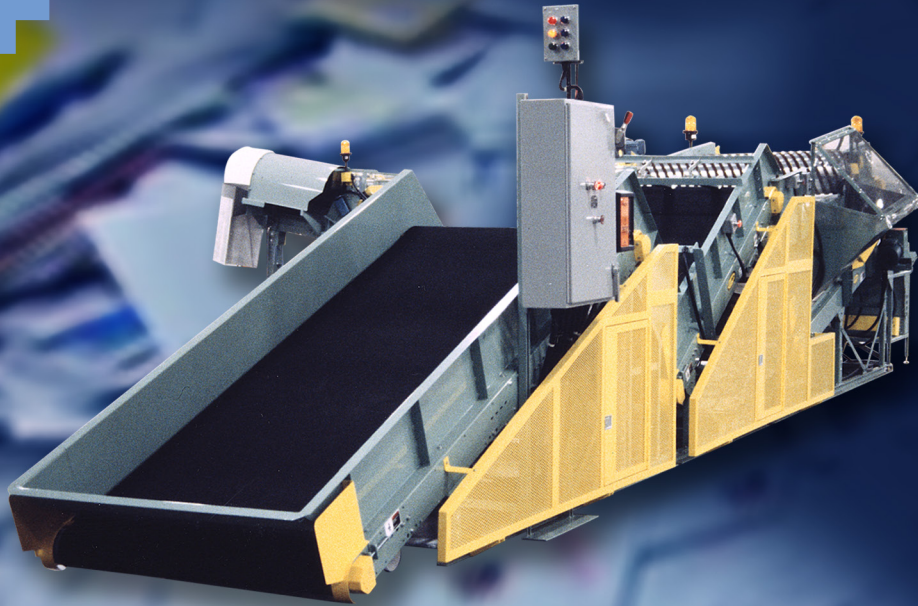


## DUAL PASS ROUGH CULL SYSTEM



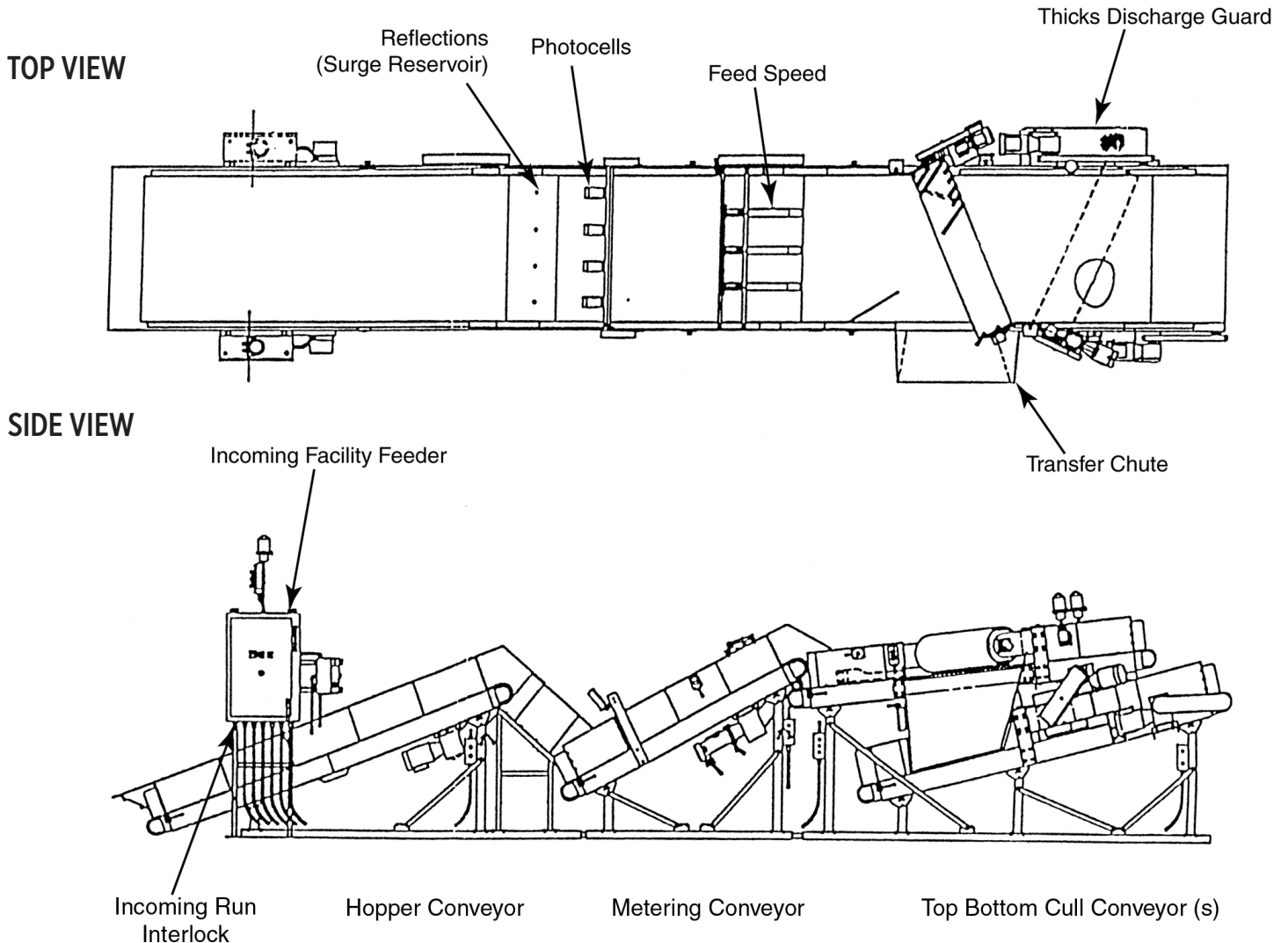
# DUAL PASS ROUGH CULL SYSTEM AUTOMATICALLY SEPARATES PACKAGES AND BUNDLES FROM FLATS AND LETTERS

The Dual Pass Rough Cull System removes parcel packages and mail bundles from the mail stream for separate handling, while allowing letters and flats mail to continue on to automated sorting equipment for further processing.

# DUAL PASS ROUGH CULL SYSTEM

## HIGHLIGHTS

- System culls collection mail (letters, flats and parcels)
- Double cull feature increases sort quality
- Reduction of manual-sort labor
- Major subsystems include:
  - Hopper conveyor
  - Incline conveyor
  - Waterfall assembly
  - Edge conveyors
    - 304.8 cm / 10 feet
    - 518.2 cm / 17 feet
    - 792.5 cm / 26 feet
  - Control electronics



Specifications subject to change without notice. The products identified herein are controlled for export under the U.S. Export Administration Regulations (EAR) and may not be exported or transferred to any non-U.S. Person, country or entity, by any means, without prior authorization from the U.S. Department of Commerce, Bureau of Industry and Security (BIS).

This document does not contain any technology or technical data subject to U.S. export control.

05-2017