

A REPUTATION FOR QUALITY AND RELIABILITY SINCE 1925

For more than 90 years, Marlo has manufactured quality heat transfer, refrigeration and air handling equipment for industrial, commercial, utility and marine markets. We're proud that one of our largest customers is the United States Department of Defense, and that we are able to consistently meet their demanding military standards for quality, reliability and delivery.

All of our products are efficiently manufactured in our state-of-the-art production facility, using lean manufacturing principles and with strict adherence to our many quality assurance programs. We only use top-quality materials, typically in heavier grades and thicknesses than the industry standards. And all of our products are thoroughly tested before leaving our facility.

The same commitment to quality and attention to detail that we put into our military products go into every MarloAIR AHU. Plus, you can count on it to not only meet your needs, but also your budget. That's why with MarloAIR, you get military grade at a competitive price!

MarloAIR™

The modular air handling unit that
configures to meet your specific needs



Because Marlo is committed to continuous improvement, specifications in this document may change without notice. Contact us for the latest information.

Marlo Coil
6060 Hwy PP • High Ridge, MO 63049
www.marlocoil.com • marlo.coils@drs.com
636-677-6600 • Fax: 636-677-1203



A CUSTOMIZED AHU AT A STANDARD PRICE –
FROM THE LEADER IN HEAT TRANSFER SOLUTIONS

With the MarloAIR™ you no longer have to choose between high-priced custom AHUs with long lead times, and off-the-shelf units with limited features that don’t meet all your needs. Now you can get the best of both worlds: a pre-engineered unit (which reduces both cost and delivery time) with a variety of modules that can be configured for your specific application, from 8,000 to 24,000 CFM.

Designed, Engineered and Built by the Heat Transfer Experts

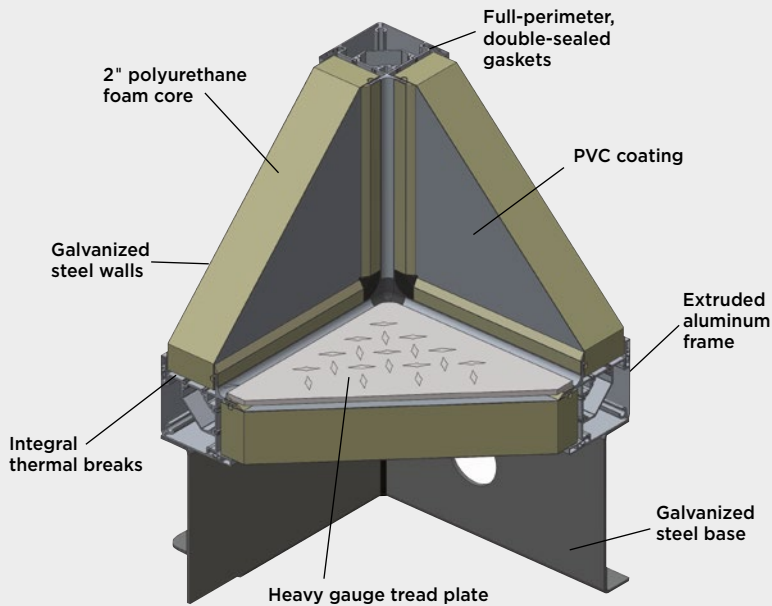
At Marlo, we have more than 90 years of experience providing custom heat transfer solutions. Marlo coils are trusted throughout the industry for quality, performance and reliability – and for meeting our customers’ broad range of diverse needs. In addition, the Marlo Stratomizer® Dampered Face & Bypass Coil is well-known for its ability to efficiently preheat and temper outside air, and to protect against freezing.

Backed by a 3-Year Warranty

With our proven coils and optional Stratomizer at the heart of every MarloAir AHU – plus top-quality materials throughout the unit – you can count on years of dependable service. That’s why we have the confidence to back the MarloAIR with a full 3-year warranty – three times the industry standard!



MarloAIR™ Advantage: SUPERIOR WALL SYSTEM



NO MATTER HOW IT’S CONFIGURED, THE MarloAIR™ HAS A RANGE OF BUILT-IN ADVANTAGES

Superior Wall System

We designed and built the MarloAIR wall system to provide excellent insulation value with minimal air leakage, including 2" foamed panels, integral thermal breaks and full-perimeter, double-sealed gaskets. Plus, every panel is constructed of galvanized steel for superior strength and durability, and is coated with PVC to resist bacteria and corrosion.

Modular Design

The pre-engineered MarloAIR can be customized to meet your specific needs without the high costs and long lead times of typical custom units. The modular design allows for easy transport to and through your building. Assembly is fast and easy. And its small footprint saves valuable floor space.

Proven Marlo Performance

The MarloAIR is built around Marlo’s industry-leading coils and Stratomizer, giving you the reliable performance that comes with our 90-year track record of innovation, quality production and thermal management expertise. Our coils undergo extensive in-house testing and are AHRI certified.

Energy Efficient Design

Air leakage and thermal transfer are the largest contributors to AHU inefficiency and increased operating costs. That’s why we added a number of extra features to maximize efficiency, including our airtight (SMACNA leak class 9 for positive pressure and class 1 for negative pressure) fully insulated wall and floor panel system, double-walled and gasketed access doors, and state-of-the-art, direct-drive, energy efficient fan and motor assemblies.

MarloAIR™: QUALITY BUILT INTO EVERY COMPONENT

Marlo Coils

Marlo’s industry-leading chilled water, hot water or steam coils provide both excellent performance and long life. Various circuit options are available with full-size return bends and properly sized headers to ensure uniform flow and minimized pressure loss.

Stratomizer®

A Marlo exclusive, the Stratomizer Dampened Face & Bypass Coil offers a proven and efficient method of preheating and tempering fresh outside air by enabling the use of full steam pressure or hot water flow to the coil at all times – eliminating freezing.

Frame

The MarloAIR’s frame is made of military grade extruded aluminum to provide years of rust-free performance, and features an integral thermal break to minimize thermal transfer.

Wall Panels

All wall panels are constructed of galvanized steel and are insulated with a 2" polyurethane foam core, offering energy efficiency and the prevention of condensation build up on exterior surfaces. The insulation is UL 94 V-O fire rated.

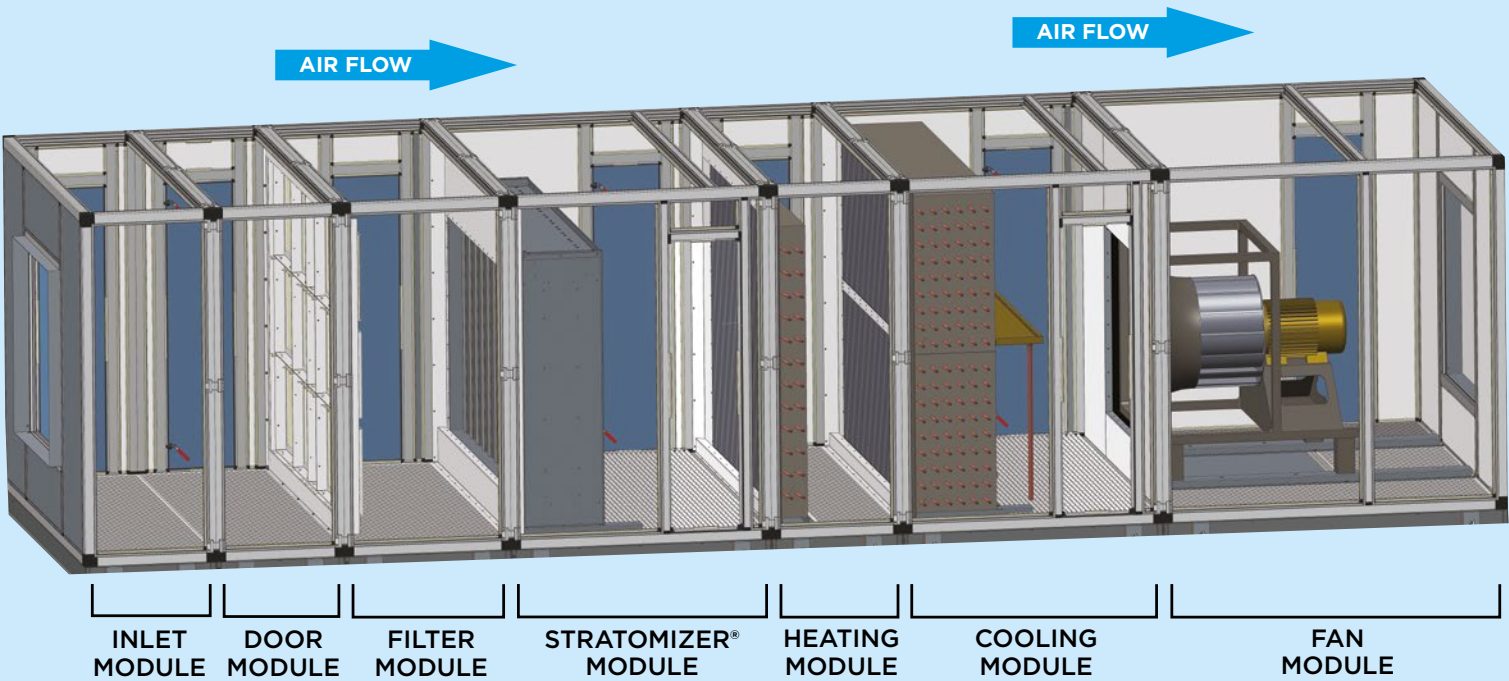
Service Doors

Access doors feature double wall construction with a minimum of two tapered pawl latches to uniformly compress the door gasket (made of closed cell neoprene) into the door jamb for an air-tight seal.

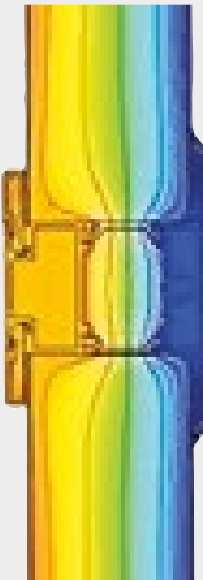
Base Systems

The base is constructed of 10-gauge galvanized steel with reinforced ribs for extra support.

24,000 NOMINAL CFM UNIT



MarloAIR™ Advantage: THERMAL EFFICIENCY



The MarloAIR offers an advanced wall design that maximizes thermal efficiency. Each extruded aluminum frame features an integral thermal break that resists heat transfer. Plus, all wall panels are constructed with a 2" polyurethane foam core for superior insulation value.

Unit Floor

The MarloAIR’s floors are constructed of heavy-gauge aluminum diamond plate to protect the insulated floor panels from damage. Floor panels are made from a sandwich of 24-gauge steel sheets on the outside with high-efficiency polyurethane foam insulation in the center. A durable coating is applied to the steel panels at the factory for added protection.

Drain Pan

The integral insulated stainless steel drain pan is double pitched, and conforms to ASHRAE standards for acceptable indoor air quality.

Fans & Motors

Energy efficient, direct drive fan and motor assemblies are designed to meet CFM and pressure drop requirements with minimal energy usage. All assemblies are mounted on vibration isolators.

Module Lights

Light kits can be added to any module to make inspection and maintenance easier.

Filter Units

Filter framing options include 2" pleated panel, 4" pleated panel and 12" rigid cartridge with 2" pleated panel.

YOUR ASSURANCE OF QUALITY

3-Year Warranty

In an industry where the standard warranty is just one year, we are proud to offer what we feel is the best AHU warranty in the business. MarloAIR is warranted against defective workmanship and material for a full three years from date of shipment. This includes third-party components such as fans, motors, dampers, etc., even when the OEM warranty has expired.

Certifications

Marlo coils are AHRI certified, meaning they meet a series of stringent industry standards. This ensures reliable performance in the field.



ISO 9001 Registered

Quality is a way of life at Marlo, with every employee being committed to continuous quality improvement. Our quality management system is ISO 9001 certified, which requires frequent surveillance audits to ensure our ongoing compliance.

Marlo *Quality*
ISO 9001:2015

Testing

All of our products are tested before leaving the factory to ensure trouble-free operation.

MarloAIR™ DIMENSIONS

	8,000 CFM	10,000 CFM	12,000 CFM	16,000 CFM	20,000 CFM	24,000 CFM
OVERALL HEIGHT	64.0"	64.0"	69.0"	69.0"	93.0"	93.0"
OVERALL WIDTH	64.0"	76.0"	84.0"	104.0"	104.0"	110.0"
INLET (MIXING) MODULE DEPTH						
AIR INTAKE MODULE	32.3"	32.3"	32.3"	32.3"	32.3"	32.3"
ACCESS MODULE DEPTH						
WITH 18" DOOR	31.5"	31.5"	31.5"	31.5"	31.5"	31.5"
FILTER MODULE DEPTHS						
2" FILTER WITHOUT DOOR	12.0"	12.0"	12.0"	12.0"	12.0"	12.0"
2" FILTER WITH DOOR	32.3"	32.3"	32.3"	32.3"	32.3"	32.3"
4" FILTER WITHOUT DOOR	12.0"	12.0"	12.0"	12.0"	12.0"	12.0"
4" FILTER WITH DOOR	32.3"	32.3"	32.3"	32.3"	32.3"	32.3"
12" FILTER WITHOUT DOOR	18.0"	18.0"	18.0"	18.0"	18.0"	18.0"
12" FILTER WITH DOOR	36.0"	36.0"	36.0"	36.0"	36.0"	36.0"
COIL MODULE DEPTHS						
COOLING COIL	50.0"	50.0"	52.0"	52.0"	64.0"	64.0"
STRATOMIZER MODULE	53.0"	53.0"	53.0"	53.0"	53.0"	53.0"
HEATING COIL WITHOUT DOOR	18.0"	18.0"	18.0"	18.0"	18.0"	18.0"
HEATING COIL WITH DOOR	32.3"	32.3"	32.3"	32.3"	32.3"	32.3"
FAN MODULE DEPTH						
FAN MODULE	57.0"	61.0"	68.0"	72.0"	78.0"	85.0"

Dimensions are approximate

MarloAIR™ MODULE CONFIGURATIONS

Inlet (Mixing) Module

- Generally the first module
- Opening sized per customer need
- Door options: left, right, both, none
- Light or no light option

Filter Module

- Generally before coil module
- 2" or 4" panel filters, or 12" cartridge filter
- MERV rating per customer need
- Door options: left, right, both, none
- Light or no light option

Door Module

- Door options: left, right, both
- Light or no light option

Stratomizer Module

- Always before fan module
- Door options: left, right, both, none
- Light or no light option

Heating Module

- Always before fan module
- Door options: left, right, both, none
- Header connection options: left, right, side
- Light or no light option
- Coil can be up to 3 rows deep

Cooling Module

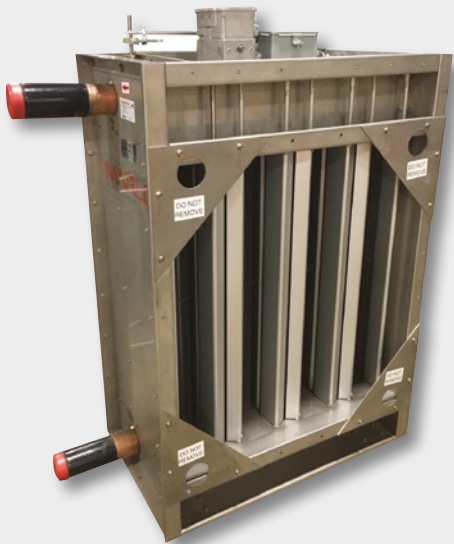
- Always before fan module
- Door options: left, right, both, none
- Header connection options: left, right, side
- Drain connection options: left, right, side
- Light or no light option
- Coil can be up to 12 rows deep

Fan Module

- Always the last module
- Access panel: left, right, both, none
- Light or no light option
- 9 motor HP sizes
- Outlet duct sized per customer need



MarloAIR™ Advantage: THE PROVEN STRATOMIZER®



The Marlo Stratomizer offers the industry's most reliable method of freeze protection. Proportioned quantities of air either bypass or are directed through the heating surface to achieve the required discharge temperature. When the outside temperature changes, the dampers automatically reposition to maintain the discharge temperature.